



IRVINE UNIVERSITY

College of Law

Catalog

2011-2012

Please note that all contents of the Catalog are subject to changes / Check frequently with the information posted on the College of Law web pages.

CAMPUS ADDRESS AND CONTACT INFORMATION

Irvine University is conveniently located in the City of Cerritos near the 605 and 91 freeways interchange adjacent to the Cerritos Auto Mall at the South Street exit. It is a short driving distance from both Long Beach airport and Los Angeles Airport (LAX). It is approximately 16 miles southeast from the Los Angeles Civic Center.

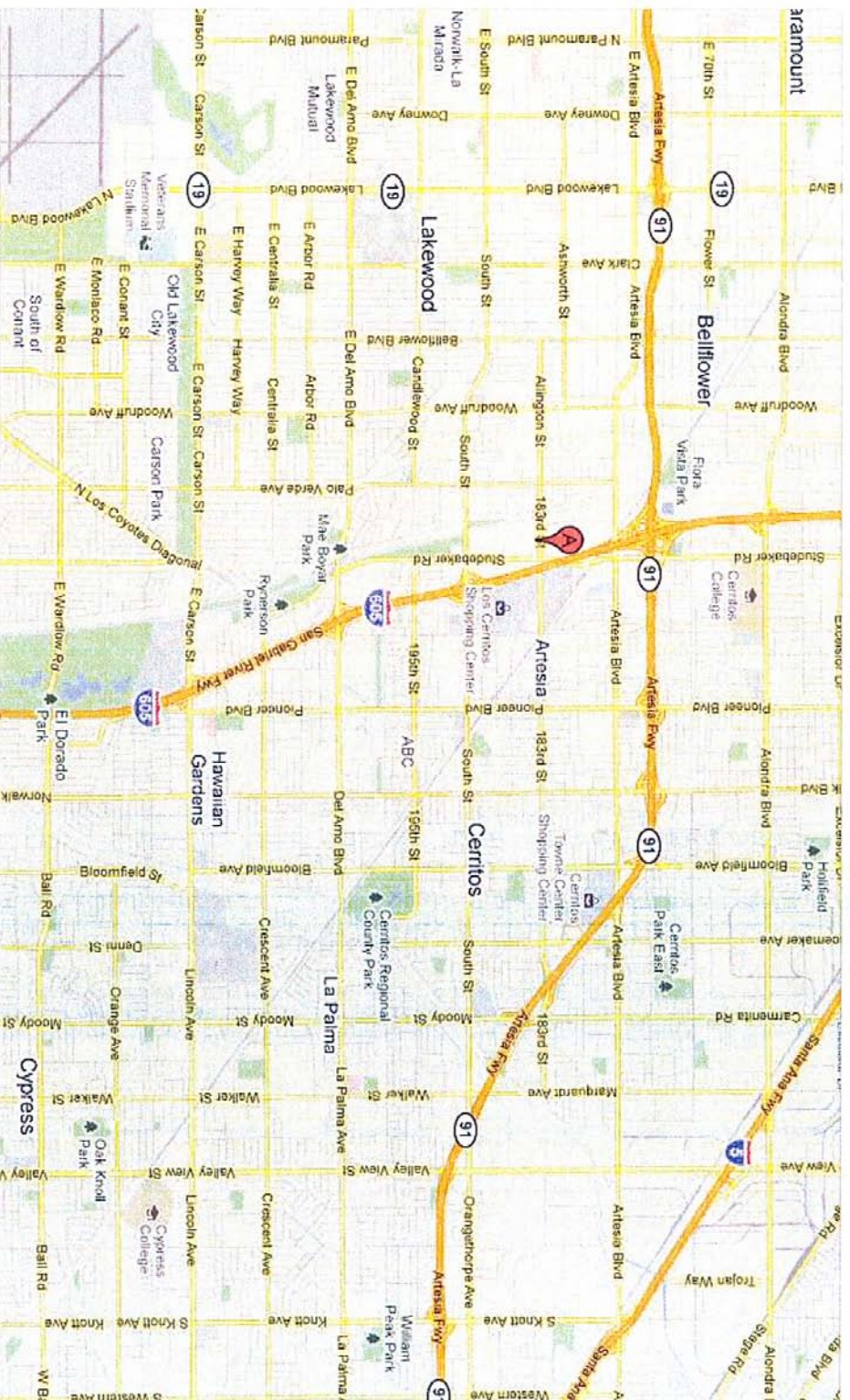


IRVINE UNIVERSITY COLLEGE OF LAW

Cerritos campus – Administration Office
10900 183rd Street, Suite #330, Cerritos, CA 90703

Tel: 562.865.7111 Fax: 562.865.5511

www.irvineuniversity.edu



To see all the details that are visible on the screen, use the "Print" link next to the map.

Table of Contents

Administration

Welcome Message from the Dean

College of Law: Mission, Purpose and Objective

Affiliations

Official School Codes

Committee of Bar Examiners Information

State Bar Regulations and Qualifying Limitations

State of California Institutional Approval and Authorization

Frequently Asked Questions

The Juris Doctor (JD) Eligibility and Admissions Process

JD Graduation Requirements

JD Course Descriptions...

College of Law Faculty

Sample JD Degree 4-Year Program of Study

Student Bar Association

Basic Fees

Academic Policies

Reservation of Powers

University Administration

LAURA D. GREATHOUSE, Ph.D

Acting President

The Board of Directors has designated Dr. Greathouse as Acting President of Irvine University for the interim period pending completion of an executive search and selection of the President. She earned a B.A. in Sociology from the University of Akron (Ohio) in 1994, M.A. and Ph.D in Anthropology from the State University of New York (SUNY) in 1997 and 2000 respectively. In addition to her interim duties, Dr. Greathouse is the Dean, College of Liberal Arts of Irvine University. Her interim appointment was effective on May 7, 2011.

JOHN LEE Y, Ed.D

President Emeritus

Dr. Lee Y. has enjoyed a distinguished career in higher education, first as former President of American College of Technology and, then, as the Irvine University's third President from 1998–2004. Under his leadership, the University grew in size, stature, and prestige. During his presidency, his achievements included the addition of the College of Business and the College of Liberal Arts. He has initiated a strategic plan for international expansion. Dr. Lee Y. has also served as panel examiner for the California State Personnel Services. He has extensive experience in business management and is the author of several books on language teaching and educational methodologies.

Dr. Lee Y. is currently engaged overseas to establish international affiliations with various institutions of higher learning to continue the University's goal towards international expansion.

RONALD JOHNSON, M.A.

Director of Admissions

Ronald Lamar Johnson received his B.A. in Sociology with a Minor in Linguistics from Divine Word College in Epworth, Iowa in 1979. He received his M.A. in Educational Administration in 1990 from the University of San Francisco. Mr. Johnson began his professional experiences at First Church of God Christian School in 1982, where he taught Social Studies. In 1987 until 2006 he served as Vice Principal of the First Church of God Christian School. In 2006, Ronald Johnson served as Principal at Desert Christian High School in Lancaster, California, and in 2007, he served as Executive Director and Principal of the Antelope Valley Desert Montessori School in Lancaster, California.

In 2000, Ronald Johnson became a member and later a chairperson of the Association

of Christian Schools International Accrediting Commission. He also served as a member and as chairperson of the visiting committee for the accrediting body of the Association of Christian Schools International and the Western Association of Schools and Colleges. Ronald Johnson was chosen by ACSI to serve on and chair the accreditation visit to Morrison Academy in Taiwan. From 1992 to 2003, He served as seminar leader for a number of staff development and educational events for the Association of Christian Schools International at the Anaheim Convention Center in Anaheim, California

REBECA ZARATE-CERVANTES

Registrar & Human Resources Director

Rebeca Zarate-Cervantes has over 25 years experience as an administrator in employment and training programs in conjunction with supportive services within a nationally recognized non-profit employment training agency. She is a former member of the Workforce Investment Boards (WIB) of Ventura County, Orange County, Santa Ana and Anaheim.

Ms. Cervantes completed a Certificate Program on Nonprofit Management in September 2002, from the California State University, Los Angeles, and in May 2002 completed the Latino Leadership Program from the Center for Nonprofit Management in Los Angeles.

RON ROSS, MBA

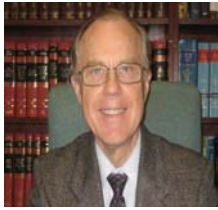
Director of Library Services

Mr. Ross has over 25 years experience as owner and operator of a multi-library services firm providing library support to law firms in the Orange and Los Angeles area. He served for 5 years as Chief Financial Officer for First Priority Investment Inc. Mr. Ross earned a B.S. and M.B.A. from Illinois University.

DAVE DUNLAP, B.S.

Technology Officer

Mr. Dunlap serves as a technical expert for Irvine University. He offers technical support for information resource acquisition and maintenance at the University. Mr. Dunlap also provides technical computer solutions. He earned his B.S. at California State University, Fullerton.



MY PERSONAL WELCOME TO YOU

The future is coming!

Think of how good you will feel when you walk across the Commencement stage to receive your JD degree four years from now. Your friends and family members will be there to cheer your success. There will be a party or two later in the day to celebrate the event. All those lost week ends and evenings that you spent sitting in the classroom listening to lectures and discussing cases will be past history. You are primed by your education to sit for the California State Bar Examination. You might do some bar prep review work but there you are at the journey's end ready to be tested for entry into the practice of law.

Today is your first day of a new beginning in your life. You made the decision to transform yourself into a lawyer. Now that transformation begins by your application to the College of Law. It will be an arduous journey.

However, you will develop better reading skills, greater writing abilities, and start to think analytically using the legal concepts acquired in your study of cases. All of this will require you to manage your time well. You have to balance your work, study and family commitments to make your goal achievable.

As you study, make new friends with your fellow students. Some of those friendships I will last a lifetime. The Student Bar Association is there to assist and make life more pleasant. There will be time to attend special law school events such as the Convocation in December or Student Forum in March of each year.

I encourage you to read this catalog and then come to our campus to speak with students, faculty and admissions staff. See for your self how Irvine University College of Law fits in your decision to study law. Begin the climb of those steps to the stage of Commencement four years from now to receive your JD degree.

Welcome!

George J. Gliaudys Jr.

George J. Gliaudys Jr.
Dean
College of Law
Irvine University

Irvine University College of Law Background

The College of Law is registered as an unaccredited fixed-facility law school with the Committee of Bar Examiners of the State Bar of California offering a four-year academic program that upon successful completion leads to conferral of the JD Degree and qualification to take the California State Bar Examination. Graduates who pass the State Bar Examination are entitled to practice law in the State and Federal Courts in the State of California.

The College of Law has always been and currently complies with all of the applicable local, state and federal regulations and laws. Irvine University is a State authorized institution of higher learning approved for granting academic degrees and certificates under the Private Post Secondary Education Act of 2009.

The College of Law has its origins in the early 1970's in the City of Irvine, California. Since 1993, it has operated under current corporate administration and relocated to the City of Cerritos in the time frame of 1999-2000 where it has remained to the present.

The goal of the College of Law is to provide quality legal education to persons who seek the opportunity to become practicing lawyers at reasonable cost and convenience.

It recognizes that most applicants to a part-time law study program are employed and must balance their work, family and study. The College of Law provides a supportive academic environment and course scheduling flexibility while challenging students intellectually in their studies.

COLLEGE OF LAW

COLLEGE OF LAW MISSION

The mission of Irvine University College of Law is to provide a practical legal education for today's adult student. The College of Law has developed a special program designed to meet the special needs of its adult students by providing an affordable, convenient legal education for today's mature student. The College of Law faculty are professionals in the legal field prepared to combine classroom lectures and practice to demonstrate the issues that face the practicing attorney in today's world.

COLLEGE OF LAW PURPOSE

The College of Law's purpose is to develop the intellectual and analytical skills of students to master the interpretation of law to succeed as a professional in the legal field. Further, it is to train, prepare, and educate mature men and women to make positive contributions to our society.

COLLEGE OF LAW OBJECTIVE

Each College of Law student is taught not only to think like a lawyer, but also to write and act like a lawyer. In addition to practical examples of how to apply the substantive law in modern "real world" situations, the development of writing skills is emphasized in every course of instruction. In addition to the Socratic Method traditionally utilized in the study of law, the professors in the College of Law use modern methods of instruction familiar to the successful businessperson, such as, role playing and interactive teaching techniques. Lectures are enhanced by the use of overhead projectors and computer generated outlines. Students are encouraged to learn in a proactive teaching environment, both in and out of the classroom.

Official School Codes

The following is a list of codes that identify Irvine University with various state agencies, reporting agencies and testing agencies:

Bureau for Private Post–Secondary Education:	3009101
Committee of Bar Examiners	90703
Department of Veterans Affairs (V.A.).	21110805
Law Schools Admissions Council (L.S.A.C.)	4285
College Level Examination Program (C.L.E.P.)	8203
CA State Bar Code:	7165

LASD- IRVINE UNIVERSITY COLLEGE OF LAW PARTNERSHIP:

The Los Angeles County Sheriff's Department consisting of over 10,000 sworn and civilian employees has initiated a consortium of local higher educational institutions to form what is commonly known as the "Star University." Irvine University College of Law is a partner within this consortium of colleges and universities. It offers admission to the Juris Doctor Degree program to members of the Sheriff's Department and affiliated Los Angeles City and County employees who wish to undertake an educational program leading to eligibility to take the State Bar Examination. LASD students are admitted to the regular Irvine University College of Law program pursuant to required pre-law educational State Bar standards but class schedules are adapted to meet the assignment requirements of law enforcement personnel. Some evening classes are conducted at the Sheriff's Training Academy which is not far from the Cerritos campus.

ADMISSIONS PROCEDURES

Admissions Application

All students who wish to apply must complete an Admissions application. Admissions Applications can be requested from the Admissions office or downloaded off the IU website. The application must be completed thoroughly or it will be returned.

Application Fee

All applicants must submit an application fee of thirty dollars (\$30.00) accompanying the Admissions Application. If the fee does not accompany the Admissions Application, the application will be disregarded. The Application fee is non-refundable.

Transcripts

All applicants must submit official transcripts from all previously attended institutions. If transcripts are from a foreign institution, please have a CA Bar-approved evaluation agency send the official evaluation directly to the Irvine University Admissions Department. Regular-Degreed applicants must show evidence of a Bachelor's Degree. Regular Non-Degreed applicants must show evidence of 60 semester units of academic content. Transfer applicants must also submit official transcripts from previous school to be evaluated.

Letters of Recommendation

All applicants are required to submit at least two letters of recommendation from people who have personal knowledge of your academic work or business background, such as an instructor, an employer, or business associate. For Law School applicants, the Law School Admission Council (LSAC) has implemented a letter of recommendation service that allows for the distribution of your letters of recommendation directly to the schools to which you are applying. Student's letters will be copied and sent to us along with your Law School Data Assembly Service (LSDAS) Report.

Law School Admissions Tests (LSAT)

Applicants for the JD degree must take the LSAT and direct that their scores be sent directly to the Registrar. The Irvine University College of Law LSAC Code is 4285. More information on the LSAT may be obtained by visiting www.lsac.org/JD/LSAT

College Level Examination Program (CLSP) Scores

For Law School applicants that fall under the Special Student category, they must send official CLEP scores directly to IU Admissions office and the State Bar Office of Admissions.

Personal Identification

All applicants are required to submit copies of two (2) pieces of personal Identification. This may include driver's license, state-issued identification card, social security card, passport, visas, etc.

Interview

After all application materials have been received, applicants must also complete a personal interview with an admissions representative. The interview gives both the student and the Admissions Department a firsthand opportunity to determine if there is a good match. Interview appointments can be scheduled during the day or evening hours on weekdays, by contacting the Admissions Department.

Registration

Once accepted for admission, students must complete registration materials. Students must then register for classes. Payment of all fees and tuition are due at the time of registration. Students may seek financial counseling with the Director of Finance at this time.

Re-Applying

The university requires all candidates who applied in prior years to complete new application materials. Any student who has withdrawn or has been dismissed from the university must submit a new application to the admissions office to re-enroll. The application must be accompanied by a non-refundable application fee.

JURIS DOCTOR (JD) – GRADUATION REQUIREMENTS

Students must pass the FYLSX and complete eighty-four (84) prescribed units with a cumulative G.P.A of 2.0 or higher. Students must apply for graduation and meet all academic and financial requirements. The following is a sample schedule of a student enrolled in the JD program. The JD program offers evening and weekend schedules. A student completes an average of twenty-one (21) units each year.



IRVINE UNIVERSITY

College of Law

Juris Doctor Curriculum

FIRST Year	SECOND Year	THIRD Year	FOURTH Year
<p>Fall Term LAW 100 Contracts I (3 units)</p> <p>LAW 120 Torts I (3 units)</p> <p>LAW 190 Criminal Law (3 units)</p> <p>Spring Term LAW 110 Contracts II (3 units)</p> <p>LAW 130 Torts II (3 units) LAW 170 Legal Writing (3 units)</p> <p>Summer Term LAW 180 Transactions in Goods (UCC) (3 units)</p> <p>1st year units: 21 Total units after 1st year: 21</p>	<p>Fall Term LAW 210 Civil Procedure I (3 units)</p> <p>LAW 230 Real Property I (3 units)</p> <p>LAW 250 Criminal Procedure (3 units)</p> <p>Spring Term LAW 220 Civil Procedure II (3 units)</p> <p>LAW 240 Real Property II (3 units) LAW 260 Community Property (3 units)</p> <p>Summer Term LAW 200 Remedies (3 units)</p> <p>2nd year units: 21 Total units after 2nd year: 42</p>	<p>Fall Term LAW 320 Corporations (3 units)</p> <p>LAW 340 Evidence I (3 units)</p> <p>LAW 360 Professional Responsibility (3 units)</p> <p>Spring Term LAW 300 Wills (3 units)</p> <p>LAW 350 Evidence II (3 units) Elective (3units)</p> <p>Summer Term LAW 310 Trusts (3 units)</p> <p>LAW 330 Document Drafting (3 units)</p> <p>3rd year units: 24 Total units after 3rd year: 66</p>	<p>Fall Term LAW 400 Agency and Partnership (3 units) LAW 410 Constitutional Law I (3 units) Elective (3units)</p> <p>Spring Term LAW 420 Constitutional Law II (3 units) Elective (3units) Elective (3units)</p> <p>4th year units : 18 Total units after 4th year: 84</p>

Required Courses

The College of Law has developed a four-year law study program with required courses to meet the educational standards as prescribed by the committee of Bar Examiners (CBE) for eligibility to sit for the State Bar Examination.

LAW 100/110 Contracts I and II (6 units) The law relating to the formation of contracts, damages, statute of frauds, breach, rescission, mistake and ambiguity, liability, third-party beneficiaries, parole evidence, assignment of rights and delegation of duties.

LAW 120/130 Torts I and II (6 units) The laws relating to civil liability for wrongs to persons and property, intentional wrongs, libel, slander, negligence, strict liability, vicarious liability, assumption of risk, and misrepresentation.

LAW 170 Legal Writing (3 units) an introduction to legal analytical thought, including practical exercises in writing and the fundamentals of legal research that provides a foundation for writing examinations and legal papers.

LAW 180 Transactions in Goods (UCC) (3 units) The law relating to sales, liabilities, and remedies of buyer and seller, implied and express warranties, and uniform commercial code.

LAW 190 Criminal Law (3 units) The law and procedure relating to crimes against persons and property, conspiracy, defenses, and the rights of the accused.

LAW 200 Remedies (3 units) The law governing the form and type of relief awarded by the courts in law and equity, damages, restitution, reformation, and injunctions.

LAW 210/220 Civil Procedure I and II (6 units) A study of common law civil procedure and its modern development of rules relating to jurisdiction and venue, pleadings motion practice, discovery, and trials, with an emphasis of federal court procedures.

LAW 230/240 Real Property I and II (6 units) The law relating to real property, freehold and non-freehold estates, future interests, conveyance, use of land, and landlord-tenant relationships.

LAW 250 Criminal Procedure (3 units) This course presents an overview of major issues presented in the administration of criminal justice, from the initial police investigation of a crime and apprehension of a suspect, through prosecution and trial.

LAW 260 Community Property (3 units) The law relating to the classification of marital property as community and separate property, management and control of the community, liability for debts, dissolution of the community, and death of a spouse.

LAW 300 Wills (3 units) The law as it relates to capacity, distribution, interstate succession, formation, alternation, and revocation of wills.

LAW 310 Trusts (3 units) The law as it relates to the creation, alternation and termination of trusts, powers and duties of the trustee, beneficiary rights, charitable trusts, and resulting trusts.

LAW 320 Corporations (3 units) The law as it relates to the study of the nature and character of business organizations including proprietorships, partnerships and corporations and how they are affected by state corporation laws, tax laws and federal securities laws.

LAW 330 Document Drafting (3 units) This course introduces "Hard copy" use of federal and state statutes and codes, court and administrative case law, ordinances, administrative law sources and decisions and rules, and digests and annotations. This course also explores online searches for legal information allowing students to evaluate the resources one finds, and assess their value compared to traditional law materials.

LAW 340/350 Evidence I and II (6 units) The rules of evidence including relevancy, hearsay and its exceptions, the best evidence rule, impeachment and rehabilitation of witnesses, presumptions and burdens of proof.

LAW 360 Professional Responsibility (3 units) The study of ethics for the attorney, including the code, case law, and CA State Bar rules.

LAW 400 Agency and Partnership (3 units) The law relating to the formation, termination, and legal consequences of agencies and partnerships.

LAW 410/420 Constitutional Law I and II (6 units) The law relating to the Constitution, Bill of Rights, powers under the Constitution, Due Process and Separation of Powers.

Elective Courses

The College of Law provides elective units to develop a well-rounded law student. Students are expected to complete six to nine (6–9) elective units to fulfill the College of Law JD degree program. The College of Law offers a variety of elective courses to broaden the law student's breadth of knowledge as well as to begin early development for legal specialization.

LAW 500 Advanced Legal Research (3units) Intensive review of legal research techniques and methods in development of pleadings, legislations, law review articles and authority for casework in such areas as torts, contracts, environmental law, administrative law, criminal law, and constitutional law.

LAW 505 Immigration Law (3 units) This course is the law as it relates to admission requirements, exclusion, deportation, enforcement agencies, citizenship, and naturalization.

LAW 510 Trial Tactics (3units) Development of confidence in presentation of a case in court; methods in picking a jury; delivery of summation; client control; Extensive use of video to eliminate negative styles of personal habits in speech and body language that detract from effective representation of a client.

LAW 515 Federal Income Tax (3 units) The law as it relates to the major provisions of tax legislation, including cases and regulations examining their impact on individual taxpayers, businesses, investments and retirement plans. The emphasis is on strategic tax planning for investments, business entities, and individual planning opportunities. This presentation is designed to meet those needs by identifying features of recent developments having special meaning to the tax practitioner and return preparer. Practical solutions to problems of the general practitioner and tax planner will be emphasized.

LAW 520 Intellectual Property (3 units) This course examines the law as it relates to intellectual property law core subjects: patents, copyrights, trade secrets, and trademarks. This course examines fundamental principles, their underlying policies, and how the laws inter-relate.

LAW 525 International Business Transactions (3 units) Current legal issues in NAFTA and similar international treaties governing corporate governance and commercial relationships in a globalized world; emphasis on cross cultural understanding of contracts, partnerships, and other business relationships.

LAW 530 Bankruptcy (3 units) This course covers the law as it relates to federal bankruptcy law. Students will learn about the rights and duties of debtors, together with the rights of secured and unsecured creditors, under the Bankruptcy Code. It will focus on the policy considerations that underlie the code, and the provisions of the code that apply in both business and consumer cases. Although the class pays particular attention to business reorganizations under Chapter 11, the course will also include sessions devoted to consumer debtors.

LAW 535 Elder Law (3units) Legal issues under the Older Americans Act; health care benefits; nursing home issues; Social Security Act benefits and hearings; and older client family law matters.

LAW 540 Domestic Relations/Family Law (3 units) This course reviews the law as it relates to the laws of marriage, annulment, divorce, child custody, and adoption. Expansion on Community property to include fault and no fault divorce, custody and related law.

LAW 545 Business Negotiations (3 units) This course focuses on the art of negotiation, theories, techniques, and the settlement conference. The aim of the course is to increase students' awareness of communication and negotiation skills. The course focuses on creating an understanding of the issues of communicating including verbal and non-verbal communication and with different managerial styles.

LAW 555 Secured Transactions in Land (3 units) Financial and contract law issues related to transactions involving real property, long-term leases, and foreign investments in land; representation of lenders and investors in financing developments in undeveloped land.

LAW 560 Estate Planning, Probate (3 units) The law as it relates to the basics of estate planning, a subject that many people fail to address as they approach retirement. It will familiarize you with the essential objectives of estate planning, its unique vocabulary, and the devices used to distribute property as intended by its legal owners while minimizing costs and taxes.

LAW 565 Environmental Law (3 units) Recent legal decisions and issues under the Federal and State EPA acts; endangered wildlife species protection laws; and Native American protected sites.

LAW 570 Appellate Advocacy (3 units) Intensive development of writing skills in preparation of appellate briefs; review of California approved citations for appellate writing; formulation of specific appellate project brief in selected legal area.

LAW 575 Cyber Law (3 units) Legal issues involved in electronic communications; recent case decisions regarding responsibilities of providers of information or

entertainment in web formats; individual privacy, employer rights, and copyright issues.

LAW 585 Appellate Advocacy (3 units) This course is designed to examine all avenues of appellate advocacy, both state and federal, with a primary emphasis on the art of argument. While argument in trial courts and other venues will be addressed, the emphasis of those topics will be on the creation or presentation of a record for appellate purposes. The course features numerous exercises, both oral and written, and student participation in those exercises is required.

LAW 590 Law Practice Management (3 units) This course examines practical considerations focusing on law office management, litigation management, and corporate practice.

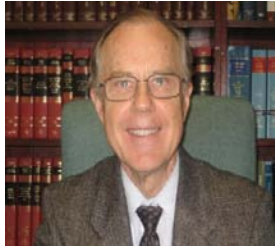
LAW 595 Insurance Law (3 units) An introduction to the essential legal concepts involved in risk management and underlying regulatory, judicial case law and statutory law governing insurance contracts.

LAW 600 Internship Program (up to 6 units) The Law School's Internship Program invites students to experience legal practice while enrolled as a law student. Students apply newly acquired legal knowledge to real world problems and this experience enriches the classroom experience. This synthesis of theory and practice builds professional confidence and competence and supports the transition from law school to professional employment.

LAW 605 Advanced Evidence (3 units) The rules of evidence including relevancy, hearsay and its exceptions, the best evidence rule, impeachment and rehabilitation of witnesses, presumptions and burdens of proof. The purpose of this course is to prepare the Attorney for the competent presentation of evidence in the courtroom. It will focus on the comparisons and differences between the Federal Rules of Evidence and the California Evidence Code. Each student should focus preparation for the California Bar Examination and providing an understanding of the history, scope, and applicability of the rules of evidence.

LAW 610 Native American Law (3 units) This course introduces the student to the tribal law system as it is currently structured within the State and Federal jurisdictional systems; treaties and compacts governing tribal relations to States are presented; and, significant modern case law interpreting Constitutional issues.

Law School Faculty



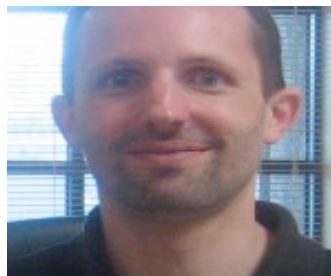
GLIAUDYS, GEORGE J., JD
Dean of the College Of Law

Dean Gliaudys received his B.A. in Psychology from the University of So. California in 1965 and J.D. from Loyola University in 1968. He served for over twenty five years as a career Deputy District Attorney for the County of Los Angeles retiring as Deputy Director for Management and Administrative Services in 2002. Dean Gliaudys was elected and served as Chairman of the Los Angeles County Manager's Quality and Productivity Network from 1995–1996. He was also a U.S. Army Reserve Judge Advocate General's Corps officer serving a combined active and reserve thirty year career in positions of increasing responsibilities until his retirement in 1998 as a Colonel. He received his Diploma in Military Studies from the U.S Army Command and General Staff College, Ft. Leavenworth, Kansas, in 1983. Dean Gliaudys served as a Commissioner for the Los Angeles County Child Support Advisory Board and as Commissioner for the Senior Citizens Commission of the City of West Covina, California. Dean Gliaudys is currently a member of the Law School Council upon appointment by Board of Governors of the State Bar of California for a three year term ending in the fall of 2013; members of the Council advise the Committee of Bar Examiners on matters relating to the content and format of the bar examination, problems of coordinating curricula and on all aspects of law school education. He is an active member of the California State Bar and inactive member of the Bar of the District of Columbia.



TRENT, NICHOLAS EDWARD, JD
Associate Dean and Professor of Law

Dean Trent received his BA in Journalism from Carleton University, Canada. He received his JD degree from Irvine University College of Law in 1996. Dean Trent's experience includes senior positions as a business executive as well as in the legal profession. He has served as President/CEO of Sutton Industries, Inc., Chairman/CEO of Alan Weston Communications, Inc., President of Maxoil Inc., and Chairman of Payday Publications, Inc. Previously a member of the law firm of Smith, Silbar, Parker and Woffinden, LLP, he is now in private practice. Dean Trent specializes in mergers, acquisitions and divestitures, and corporations and contract law. Dean Trent is an active member of the California State Bar.



CARON, SCOTT E., JD
Associate Professor of Law

Prof. Caron received his BFA in Dramatic Writing from New York University in 1998 and JD from Whittier Law School in 2003, graduating in the top 2% of his class. Prof. Caron has served on the Moot Court Honors Board for the University of San Diego Criminal Procedure Competition in 2001 and 2002, the Burton Weschler First Amendment Competition in 2002 and 2003 at the University of San Diego. He also received the CALI Awards for Excellence in the areas of Real Property, Commercial Transactions I (UCC), Constitutional Law, Criminal Procedure, Professional Responsibility Skills, and the First Amendment Seminar. Prof. Caron's other experiences include serving as a Literary Assistant at Florida Studio Theatre in 1998–1999, a Quality Control Reviewer for Merrill Corporation in 1999 – 2000, and currently practices with Kirkpatrick and Fields, LLP since 2001. Prof. Caron is an active member of the California State Bar.



EICHLER, GREGG A., JD
Professor of Law and Chief Faculty Advisor

Prof. Eichler received his B.A. in Political Science from California State University, San Jose in 1973 and JD from the University of the Pacific, McGeorge School of Law in 1977. Prof. Eichler's professional experiences include serving as an Attorney and Shareholder for Eichler Law Corporation from 1977–1987, as a Regional Assistant United States Trustee with the United States Department of Justice, Office of the U.S. Trustee from 1988–1990, and currently as the principal attorney with Law Offices of Gregg A. Eichler since 1999. Prof. Eichler serves as a Member of Board of Governors for Pilgrim School (term 2004–2007). He is an active member of the California State Bar.



JASON TOLERICO, JD
Assistant Professor of Law

Prof. Tolerico received his Bachelor of Arts in 1996, in Political Science from the University of Southern California. He later attended Whittier Law School where he was graduated in 2005 Magna Cum Laude with a Juris Doctorate degree. He also received CALI Awards in Wills, Entertainment Law and Legal Skills. While in school, he participated in several Moot Court trials throughout the state with his Trial Advocacy colleagues in competition against law schools from Southern California. He was also a Student Body Representative as well as an intricate part of a committee that worked side by side with the Dean dedicated to improving the school's Bar Passage rate. Professor Tolerico worked as a clerk at the Public Defender's Office at Harbor Court in Newport Beach during Law School. Furthermore, he has passed the bar exam in

California as well as Nevada, New York and Arizona. Professor Tolerico runs a personal and private bar review course called One-Timers. Professor Tolerico is an active member of the Nevada State Bar.



LEWIS, NICOLE R., JD
Assistant Professor of Law

Prof. Lewis received her BA in Political Science from CSU, Fresno in 1996 and JD from Western State University College of Law in 2000. During her undergraduate studies, Prof. Lewis was earned the following awards / distinctions: Dean's Honor List – Spring 1993 and Fall 1994, Dean's Honor List – Spring 1995 and Fall 1995, Black Faculty and Staff Scholarship Recipient – Fall 1995, Honorable Mention – National Black Graduate Student Research Conference – Spring 1996 and the Outstanding Student Award, Department of African American Studies – Spring 1996. During her graduate studies, Prof. Lewis was earned the following awards / distinctions: West Publishing Company Corpus Juris Secundum Award, Criminal Law (San Francisco Law School), American Jurisprudence Bancroft – Whitney Award, Criminal Law (San Francisco Law School) – 1997 – 1998, the Eric Falconer Scholarship Recipient (San Francisco Law School) and the Ester F. Blum Foundation Award Recipient (San Francisco Law School) in Fall 1998, and the Dean's Scholar in Fall 2000. Prof. Lewis' professional experiences include serving as the Mayoral Aide – Constituent Services Representative with the City of Los Angeles Mayor's Office from 2001 – July 2002, as a Staff Attorney with County of Los Angeles Child Support Services Department from 2002 –2003, and as an Associate Attorney with the Law Office of Douglas and Garey, LLP from 2003 –2004, as the Solo Practitioner for the Law Office of Nicole R. Lewis since 2004. Prof. Lewis' educational experiences include serving as a Structured Study Group Leader for Western State University College of Law preparing written lesson plans, reviewing practice exams, and helping first-year law students to engage in cooperative learning. Prof. Lewis is an active member of the California State Bar. She was a nominee for the 2007 State Bar Diversity Award.



NICOLL, SID L., JD
Adjunct Associate Professor of Law

Prof. Nicoll received his BS in Journalism from Boston University in 1958 and JD from Dickinson School of Law, Carlisle, PA in 1964. He is principal in Sidco Benefits Plans of Long Beach, California. He is an active Member of the Massachusetts State Bar.



MANDEL, CHARLES, JD
Assistant Professor of Law

Prof. Mandel received his B.A. cum laude from University of California– Los Angeles in 1976 and JD from Pepperdine University School of Law in 1980. He is a Head Attorney in the Department of Child Support Services of the County of Los Angeles. He received national recognition from the National Child Support Enforcement Association in 2006 as one of that year's best child support attorneys and managers. Prof. Mandel is an active member of the California State Bar.

SIMMONS, DALLAS, JD
Assistant Professor of Law

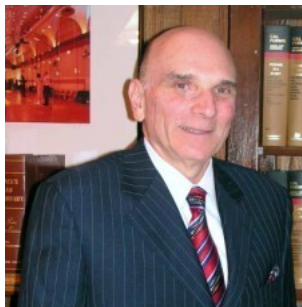
Prof. Simmons received his B.A. from Purdue University in Indiana in 1973 and J.D. from University of West Los Angeles School of Law in 1985. He has been in practice for 22 years as an attorney for a major insurance company performing staff, trial and corporate functions. He has been involved in teaching seminars and workshops on insurance law for attorneys, adjusters and other claims risk managers. He is an active member of the California State Bar

BARILLA, FRANK, JD
Adjunct Assistant Professor of Law

Prof. Barilla received his B.S. from Mercy College in New York in 1972 and J.D. from Western State University Law School in 1979. Since 1982 he has been in private practice focusing on criminal defense and family law. He has taught paralegal courses and law courses at various educational institutions since 1986. Prof. Barilla is an active member of the California State Bar.

JAROSCAK, MAUREEN P., JD
Adjunct Assistant Professor of Law

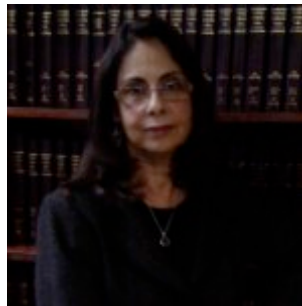
Prof. Jaroscak received her B. A. from California State University, Fullerton, in 1973 and J.D. from Western State University Law School in 1984. She was the Editor in Chief of the Western State University Law Review while attending law school. Since 1983 Prof Jaroscak has worked in corporate, private law offices, and is currently a partner in Oxman and Jaroscak Law Firm. She has lectured in CLE courses for attorneys from 2005 until currently in legal ethics, bias and substance abuse. Prof. Jaroscak is an active member of the California State Bar.



KLEIN, GERALD, J.D.,
Assistant Professor of Law

Prof. Klein received his B.S.L and J.D. from Western State University Law School in 1975. He is a Certified Specialist – Family Law – by the State Bar of California Board of Legal Specialization. He has served as Juvenile Court Referee, Judge Pro Tem and Consultant

on Domestic Violence for various groups. He was Founder and Executive Director for a non-profit agency "Kids First" that addresses children issues. He received the State Bar's "President's Pro Bono Service Award" in District 8 in 1985. Prof. Klein is an active member of the California State Bar.



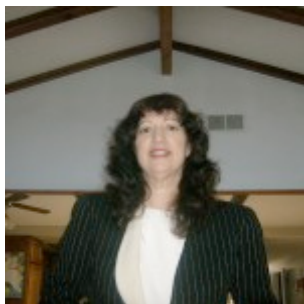
LUGO-RINALDI, CHRISTINE, JD
Assistant Professor of Law

Prof. Lugo-Rinaldi received her B.A. in Political Science from California State University, Long Beach and J.D. from Whittier Law School in 1983. While in law school, she was a member of the Moot Court Honors board where she received the award for Bests Competitor. Prof. Lugo-Rinaldi was chosen by the California Young Lawyers Association to receive their Most Outstanding Student award and First Place oralist and Second Place Team Award in the Robert J. Traynor statewide moot court competition. Prof. Lugo-Rinaldi practiced civil law in the firm of Findley, Clark and Tanzman where she handled a variety of civil cases. In 1984, Prof. Lugo-Rinaldi joined the Office of The Public defender where she , literally, practiced her career in the court room as a criminal lawyer. She completed more than 80 jury trials, 44 court trials and numerous and various kinds of motions. Her practice included Felony and Misdemeanor criminal court, Juvenile court and Family law court. Prof. Lugo-Rinaldi also has taught at Whittier Law school where her classes have included Trusts and Estates, Criminal Law, Evidence, Criminal Procedure and the Uniform Commercial Code. Her professional experience also includes teaching at U.C. Irvine, where she was recognized for her contribution to the Gifted Student Program. Prof. Lugo-Rinaldi has been active with the California State Bar serving as vice president of the Committee on Ethnic Minority Relations and was a featured speaker in the role of the public service lawyer. She is an active member of the California State Bar.



LAM, TUAN A., JD
Assistant Professor of Law

Prof. Lam received his B.A. from University of California, Irvine, in 1993 and his J.D. from Boalt Hall School of Law at the University of California, Berkeley, in 1997. He has been active in private law practice with several large law firms as well as serving as Deputy District Attorney for Los Angeles County handling criminal hearings. Prof. Lam is on the Board of Directors for the City of Garden Grove Chamber of Commerce, Habitat for Humanity and is involved in several other community-based organizations in Orange County. Prof. Lam is an active member of the California State Bar



TANNEHILL, MADELINE, JD
Assistant Professor of Law

Professor Tucci Tannehill received her B.A. in History, Magna Cum Laude, from Mount St. Mary's College in 1977 and her JD from Western State University College of Law in 1980. For over 17 years, she worked as a personal injury and commercial litigator, during which time she became the first female partner of a law firm where she practiced for nine years prior to opening the doors of Tannehill & Tannehill with her husband in 1995. Since 2003, Professor Tucci Tannehill has operated her own private mediation practice and during this time she has conducted in-house mediations for Vons, and worked as a court and private mediator through Dispute Resolution Service, Inc. of the Riverside County Bar Association. She also received a three-year appointment, 2009–2011, as court mediator of Riverside Superior Court's 2009 Civil Mediation Program. She is an active member of the California State Bar.



RAINEY, GEORGETTA, JD
Assistant Professor of Law

Professor Rainey received her B.A. degree at Oakwood University, Huntsville, Alabama in 1982 and her JD at Howard University Law School in 1986. She received the AMERICAN JURISPRUDENCE AWARD in the areas of Commercial Paper and Legal process and was selected to be Assistant to the Vice President of Howard University School of Law. Ms. Rainey served as a Student Assistant Instructor in Property Law and graduated in the top 25% of Law School Class. In September of 1990, Ms. Rainey founded the law firm Ricks Rainey Attorneys at Law. The firm was formerly the Law Offices of Georgetta Ricks Rainey. The firm specializes in Family Law, Personal Injury Law, Real Estate Law and Entertainment Law. She is an active member of the State Bar of California.



HUGNAGEL, ROBERT, JD
Assistant Professor of Law

Robert A. Hugnagel received his JD from Southwestern University School of Law in 2000. While in law school, Robert was a Board Member of South western's Trial Advocacy Honors Program. Robert earned a B.A. in Economics with a minor in Political Science from the University of California, Riverside in 1997. He is a civil and business litigator with an emphasis on professional liability. Robert is an active member of the California State Bar.



NAIMI, HALEH, JD, LLM
Assistant Professor of Law

Prof. Naimi received her B.S. in Mathematics and Economics from UCLA and M.A. in Economics from Georgetown University. She was a Dean's List graduate from Southwestern University School of Law where she earned CALI Excellence Awards in Secured Transactions and Federal Corporate Taxation. In 2005, she earned her LL.M. in Taxation from New York University School of Law. After serving as a judicial law clerk to the Honorable Arthur M. Greenwald, United States Bankruptcy Court Judge, Professor Naimi spent six years in private practice representing clients in many of the country's most complex Chapter 11 proceedings. She currently operates her own law practice specializing in bankruptcy and commercial litigation. She is admitted to practice in the United States District Court for the Central District of California and the Southern and Eastern Districts of New York. She is an active member of California State Bar.



HOANG, RICHARD, JD
Assistant Professor of Law

Prof. Hoang received a B.S. in chemistry from the University of California, San Diego in 2000. He then received his JD from Southwestern University School of Law in 2004. Professor Hoang is a civil litigator with experience in employment law, as well as, professional responsibility liability cases. He is a member of the Los Angeles Bar Association Professional Responsibility and Ethics Committee. He is an active member of the California State Bar.



WIGGINS, HERBERT, JD
Assistant Professor of Law

Prof. Herbert Wiggins received a B.A. cum laude in History and Spanish from Dartmouth College in 1981, a JD from Boalt Hall School of Law, University of California, in 1985, and an MBA from Marshall School of Business, University of Southern California, in 2000. He is a Los Angeles-area litigator of long experience, having served as a retained outside attorney for companies such as Ford Motor Company, Kaiser Permanente, McDonnell Douglas, and Mobile Oil, as well as public entities such as the Los Angeles and Oakland Unified School Districts, the County of Los Angeles, the City and County of San Francisco, and the San Francisco Housing Authority. He primarily practices in the field of Bankruptcy Law. He is an active member of the State Bar of California.



SALZMAN, CHAD, JD
Assistant Professor of Law

Prof. Salzman earned a B.A. degree from Arizona State University in 2003, and received a JD from McGeorge School of Law (Sacramento) in 2006. He is currently a Deputy City Prosecutor for the City of Long Beach. Prior to that position he was a Deputy District Attorney for the County of Sacramento. He is a trial attorney involved in criminal prosecutions. He also sits on the Board of Governors for the Long Beach Bar Association. While attending McGeorge School of Law, he held leadership roles in the Student Bar Association. Mr. Salzman is an active member of the State Bar of California.

STUDENT BAR ASSOCIATION

MISSION STATEMENT

“The Student Bar Association of Irvine University College of Law is committed to supporting a quality learning experience throughout the JD curriculum. We focus on being the student communications center, enriching your professional learning experience. Our Issue Spot Blog and group meetings promote camaraderie, raising issues, and proactive discussion. The SBA is your advocate as you develop the professional skill set requisite to a successful career in law.”

All law students may belong and participate in the activities of the SBA. There is a nominal membership fee. It is an independent non-profit incorporated organization which represents the student concerns as a group to the administration of the College of Law.

MONTHLY PROGRAMS

Student input has identified as a first priority preparation for passing the FYLSX, the State Bar’s administered first-year law student examination. SBA monthly educational support activities and programs help facilitate “exam-ready” skill development in issue spotting, rules of law, application of fact patterns, insightful argument and conclusion (IRAC), and collaborative MBE multi-state question learning. Outside speakers and faculty present their expertise and insights to FYLSX preparation.

ANALYTIC and WRITING SKILLS DEVELOPMENT

The SBA in collaboration with Associate Dean Trent’s Introduction to Law Study Program has instigated the development of a writing skills preparatory course and simulated “baby” bar examinations for students facing the FYLSX.

TUITION

College of Law Degree Programs (per unit)	\$400.00
---	----------

NON-TUITION COSTS

Application Fee (non-refundable)	\$30.00
Registration/Material Fee (non-refundable)	\$75.00

(Please check the Financial Page of the IU website for current information on related fees and charges,)

OTHER EXPENSES AND COSTS

Casebooks, Texts, Stationary Items

Laptop, portable printer, Lexis access fee

State Bar Law Student Registration

First-Year Law Students' Examination

Changes In Fee Schedule

- Tuition and fee charges are subject to change at the school's discretion.
- If there are any tuition or fee increases, changes become effective after the 1st, 2nd or 3rd full year of completed study for the next academic year.
- The student will be notified prior to any tuition changes.

Methods Of Payments

Payments may be made by credit card (Visa, American Express, MasterCard, Discover, cash, money order, cashier's check, or certified check.

All payments can be paid in person on campus to the Irvine University Registrar. Payments can also be mailed to the University at the address 10900 183rd Street, Suite 330, Cerritos, CA 90703, or payments can be paid online through the Irvine University registration website <http://www.irvineuniversity.edu/index-2.html>

Tuition and Registration fees for each semester must be paid in full prior to the 1st start date of the class, unless you have received approval from the Registrar to pay using one of Irvine University's payment plan options.

Payment Plan Options and Policy

Irvine University offers three payment plans to assist students with their financial needs.

As a student at Irvine University, you are free to choose from any one of these options:

1. Payment in Full: Tuition is due by the start date of the 1st course of the semester.
2. Two Installments Deferred Payment Plan:
3. This Irvine University Deferred Payment Plan is available where deferrable charges, such as tuition and certain fees are paid in two installments. The total fees for the semester are divided into two equal payments. The 1st payment is due prior to the 1st start date of the class, and the 2nd installment is due by midnight Saturday of the 8th week of the semester. There is a \$25 fee for the two installment deferment plan.
4. Three Installments Deferred Payment Plan: This Irvine University Deferred Payment Plan is available where deferrable charges, such as tuition and certain fees are paid in three installments. For three installments, the total fees for the semester are divided into three equal payments. The 1st payment is due prior to the 1st start date of the class, the 2nd installment is due by midnight Saturday of the 5th week of the semester, and the 3rd installment is due by midnight Saturday of the 10th week of the semester. There is a \$50 fee for the three installment deferment plan.

To request a deferment plan, please complete the Deferment plan form available online or through the Registrar's office. The form must be submitted to the Registrar prior to the start date of the 1st class to receive approval. Student Cancel, Drop, and Withdraw Policy:

Student's Right To Cancel

You have the right to cancel your agreement for a program of instruction, without any penalty or obligations, through attendance at the first class session or the seventh day after enrollment, whichever is later. After the end of the cancellation period, you also have the right to stop school at any time; and you have the right to receive a pro rate refund if you have completed 60 percent or less of the scheduled hours in the current payment period in your program through the last day of attendance. A written notice must be submitted to the Registrar. Cancellation must be requested and approved. The student will receive a 100% full refund – (minus) the application and registration fees.

Student Drop Policy

1. A student is considered to have dropped a course when the student drops the course(s) during the 1st week (7 calendar days from the start date of the class) that the course begins, with no intention of returning.
2. A student may drop a course that they have enrolled in at Irvine University, within this time-frame, and receive a refund for all or part of the courses not taken.
3. The course is completely taken off the student's transcript, with no record of ever registering for the course.

Your refund rights are described in the Refund Policy below. You will receive up to a 90% refund – (minus) the application and registration fees.

To drop your course(s), mail or deliver a signed and dated copy of the Notice of Drop form, which includes a written statement requesting to drop and the reasons for it, to the University at the address 10900 183RD Street, Suite 330, Cerritos, CA 90703. You may also fax such notice to 1-562-865-5511 or e-mail it to registrar@irvineuniversity.edu

Student Withdraw Policy

1. A student is considered to have withdrawn from a course when the student drops the course(s) after the first week that the course begins.
2. When a student withdraws from a course, the student will receive a "W" on their transcript.
3. Your refund rights are described in the Refund Policy. You will receive up to a 60% refund – (minus) the application and registration fees.
4. To withdraw from your course(s), mail or deliver a signed and dated copy of the Notice of Withdraw form, which includes a written statement requesting cancellation and the reasons for it, to the University at the address 10900 183RD Street, Suite 330, Cerritos, CA 90703. You may also fax such notice to 1-562-865-5511 or e-mail it to registrar@irvineuniversity.edu.

Refund Policy

Percent of Attendance Time – Maximum Amount of Refund

Up to 10% of class attendance hours: 90%
Over 10% – 25% of class attendance hours: 75%
Over 25% – 60% of class attendance hours: 60%
Over 60% of class attendance hours: No refund

SCHOLARSHIP PROGRAM

PRESIDENT'S SCHOLARSHIP

Established to encourage diversity within the student body, the President's Scholarships are available to students with educationally or economically disadvantaged backgrounds. The Scholarship Committee selects recipients from application's personal statements addressing their background, hardships, achievements and financial need. Previous academic performance is also a criterion. Scholarship recipients are required to achieve and maintain a 2.5 or better cumulative grade point average in first-year classes and a 3.0 G.P.A. or better cumulative grade point average in the remaining years of courses. Failure to maintain the required G.P.A.'s will result in the automatic and permanent forfeiture of the award. Scholarship Awards may vary. Please see the Dean or administration for more details.

STUDENT LOANS

For those students who are interested in applying for an Unsecured Tuition Loan, the **Schools Federal Credit Union** and **Wells Fargo Bank**, work with the University to assist eligible students with their tuition costs. Information and forms may be obtained at the University's Administrative Office. The Director of Admissions or the Registrar has further information.

VETERAN'S BENEFITS

The University's programs are approved for enrollment of persons eligible to receive educational benefits under **Title 38, U.S. Code**. Students who are eligible for educational assistance through the Veterans' Education Benefit programs may obtain information and forms from the University's Administration Office, or directly from the Department of Veterans Affairs Educational Services at www.gibill.va.gov or by calling them directly at 888.442.4551. Members of the **National Guard** and the **Selected Reserve** may also be eligible for educational assistance. The VA Facility Code for Irvine University is 21110805.

ACADEMIC POLICIES

ADMISSIONS

Upon being accepted, the student must register and enroll in a course for the applied term. If a student has not registered and enrolled in a course within six months from date of acceptance, student's acceptance status will be revoked. Student must then reapply and repeat the admissions process.

ACADEMIC YEAR

The University operates on a semester basis. The academic year consists of two (2) 16-week semesters and one (1) summer term. The fall semester commences in August, the Spring semester in January, and the summer term in May.

SCHEDULE OF CLASSES

Irvine University offers evening and weekend classes to meet the needs of its working students. Evening sessions generally meet for four (4) hours two times a week from 6:00 pm–10:00 pm. Weekend sessions meet from 8:00 am to 6:00 pm.

SEMESTER-CLOCK INSTRUCTIONAL HOURS

One semester unit equals fifteen (15) semester hours of instruction.

EXAMS and GRADES

The University uses the traditional 4.0 scale grading system for all examinations and final grades.

Percentage	Grade	Grade Point	Description
93% – 100%	A	4.00	Superior
90% – 92%	A–	3.67	Excellent
87% – 89%	B+	3.33	Good
83% – 86%	B	3.00	Good
80% – 82%	B–	2.67	Good
77% – 79%	C+	2.33	Average
73% – 76%	C	2.0	Average
70% – 72%	C–	1.67	Average
67% – 69%	D+	1.33	Poor
63% – 66%	D	1.00	Poor
60% – 62%	D–	0.67	Poor
<60%	F	0.00	Failing

JD degree students are expected to maintain no less than a 2.0 (C) GPA on a 4.0 (A) grade scale each academic year for continuation in the College of Law. Those who fall below a 2.0 GPA are placed on probation and if the student remains on probation for two consecutive semesters he or she will be academically reviewed for dismissal from the JD degree program.

Final examinations are given at the end of each course. All examinations are graded and grades are sent to students via email and hard copy stamped confidential. Examination criteria are uniform, fair and fully disclosed to the students. (Law exams are consistent with the rules and regulations of the Committee of Bar Examiners). Curving of grades is not permitted and grade inflation is not tolerated. Persons seeking to resolve problems or complaints about their grades should first contact the professor in charge. Further requests may be made to the Dean.

ACADEMICS DISTINCTIONS

1. Graduation with Highest Honors – Students who graduate with an overall grade point average above 3.7.
2. Graduation with Distinguished Honors – Students who graduate with an overall grade point average of 3.6 – 3.7
3. Graduation with Honors – Students who graduate with an overall grade point average of 3.0 – 3.5
4. Dean's List – Students who earn a semester grade point average of 3.0 or higher, for that semester.

JD COMPLETION TIME

Students are expected to complete the JD degree program within four (4) academic years from admission and enrollment into their first year of study. Delays due to health, military duty, or other unforeseen events may be allowed but the State Bar will need to be petitioned by the student.

RESERVATION OF RIGHTS

The information contained in this catalog summarizes pertinent information regarding the policies and practices of the College of Law. It is not a contract nor binds the Board of Directors of Irvine University or its management staff from changing any item described in the catalog with or without notice. The Student Handbook contains more detailed information for the student who enrolls in the JD Degree program. It is given to each student who enters the College of Law.